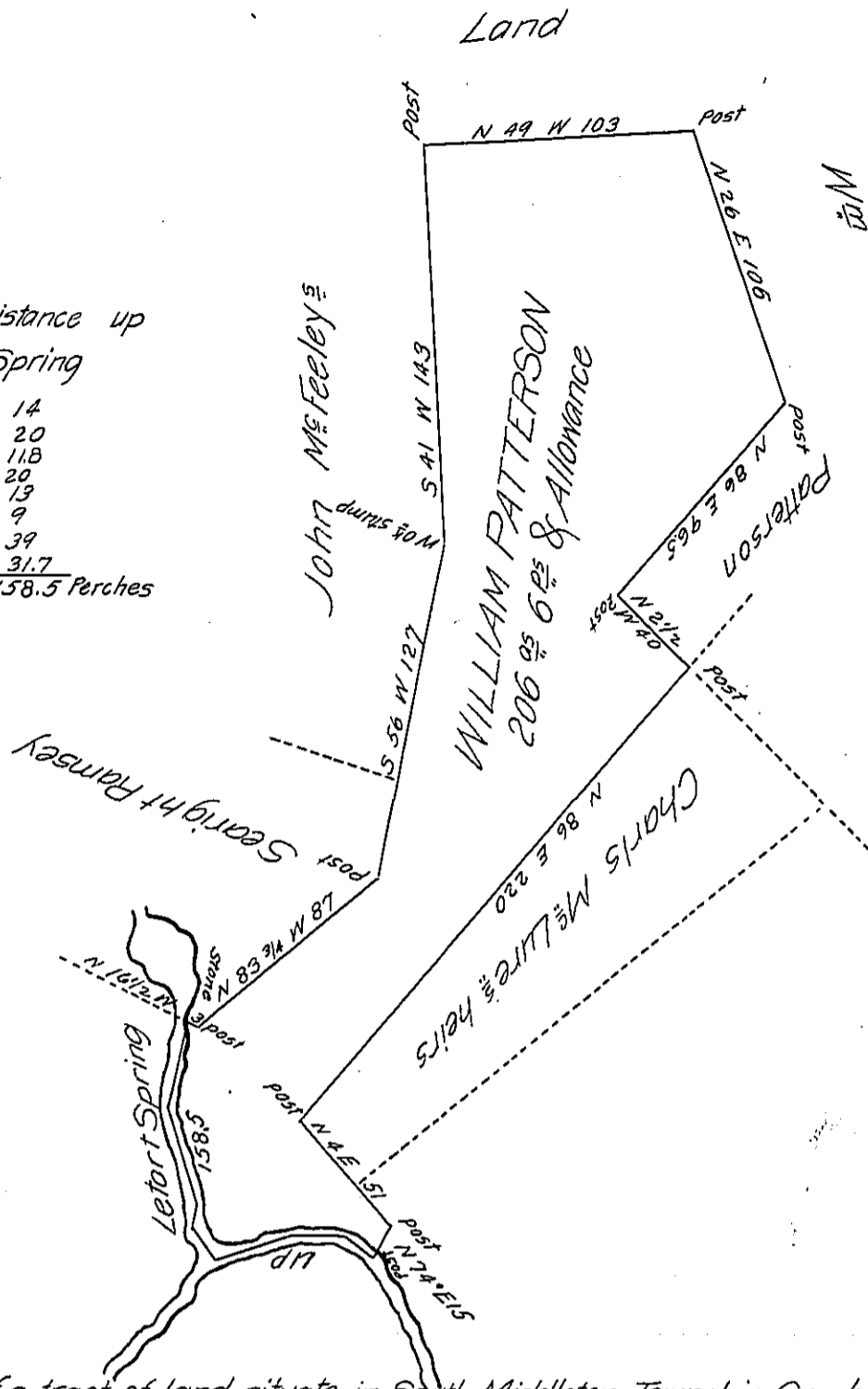


Cor^{rs} and Distance up
Letart Spring

| | | | |
|---|--------|---|---------------|
| S | 3 1/2 | W | 14 |
| S | 43 | E | 20 |
| S | 58 | E | 118 |
| S | 66 3/4 | E | 20 |
| S | 5 1/2 | W | 13 |
| S | 60 3/4 | W | 9 |
| S | 29 | W | 39 |
| S | 59 | W | 31.7 |
| | | | 158.5 Perches |



Draught of a tract of land situate in South Middleton Township Cumberland County Containing two hundred and six Acres & six perches & Allowance of Six P. Cent &c. It being part of 271 acres and 59 perches & Allowance Surv^d. In pursuance of a Warrant granted to William Patterson dated the 23^d day of Dec^r. Anno Domini 1762. Surv^d March 4th Dom. 1822

*To Samuel Cochran Esquire
Surveyor General*

Sam^l Ruby D.S.

IN TESTIMONY that the above is a copy of the original remaining on file in the Department of Internal Affairs of Pennsylvania, made conformably to an Act of Assembly approved the 16th day of February, 1833, I have hereunto set my Hand and caused the Seal of said Department to be affixed at Harrisburg, this fifteenth day of May 1906

Joac P. Brown
Secretary of Internal Affairs.